


Registration From RTT's View



Pooneh Porrangi

PARDISNOOR IMAGING
AND CANCER CENTER

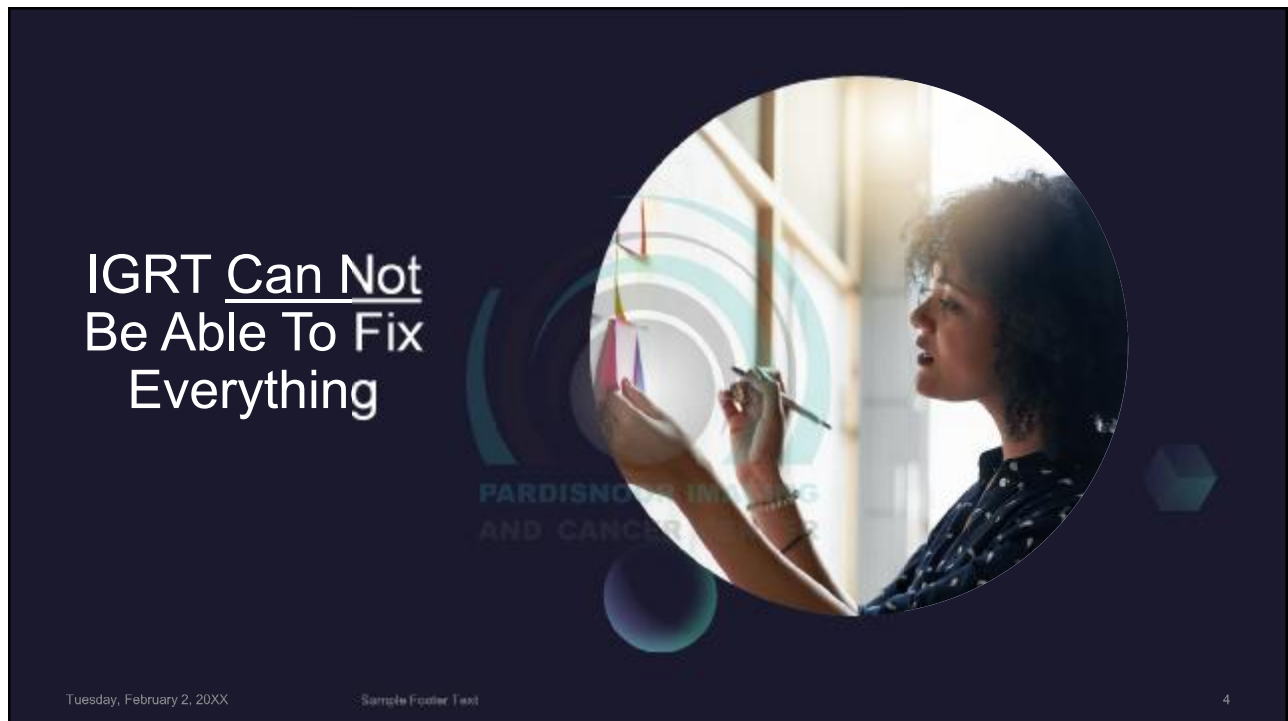


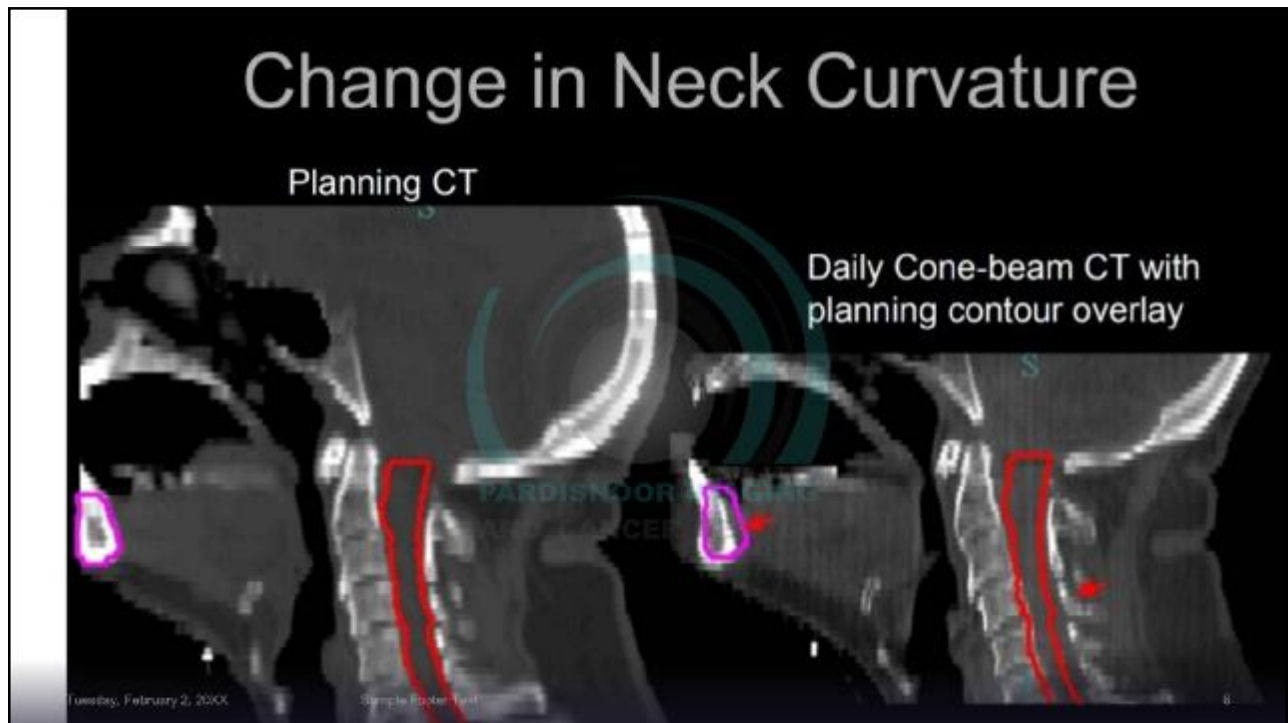
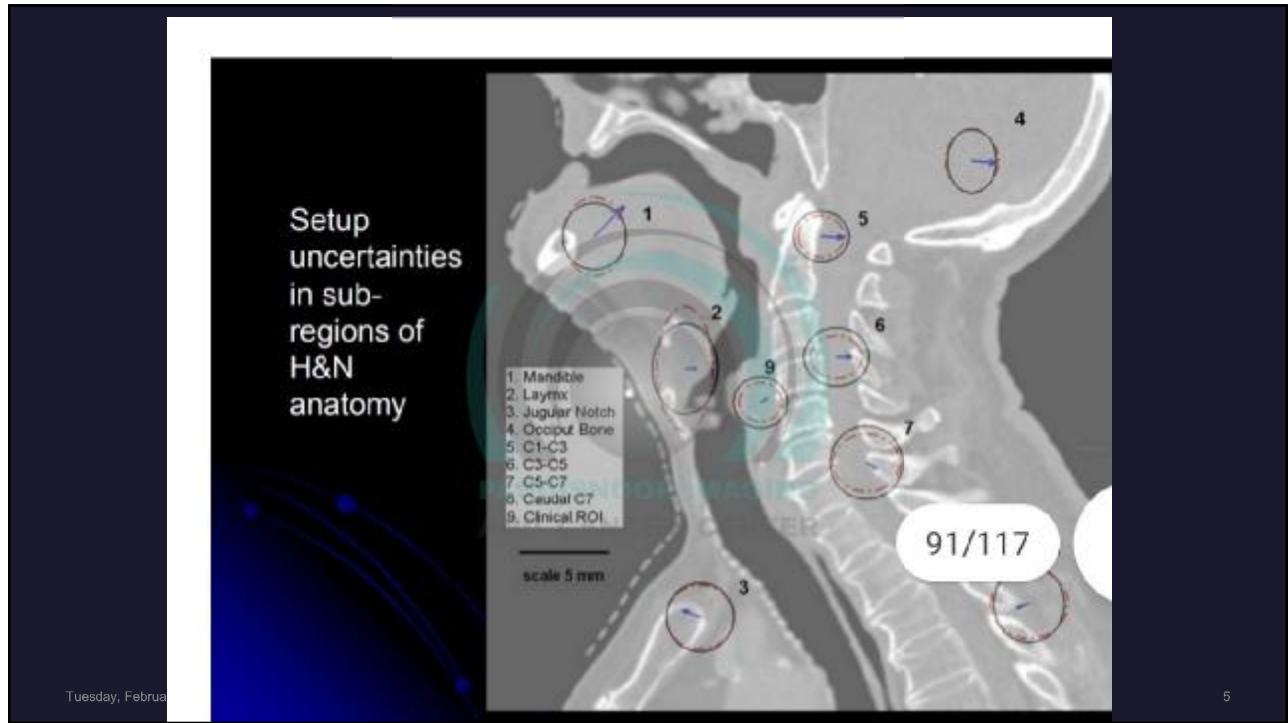
Introduction

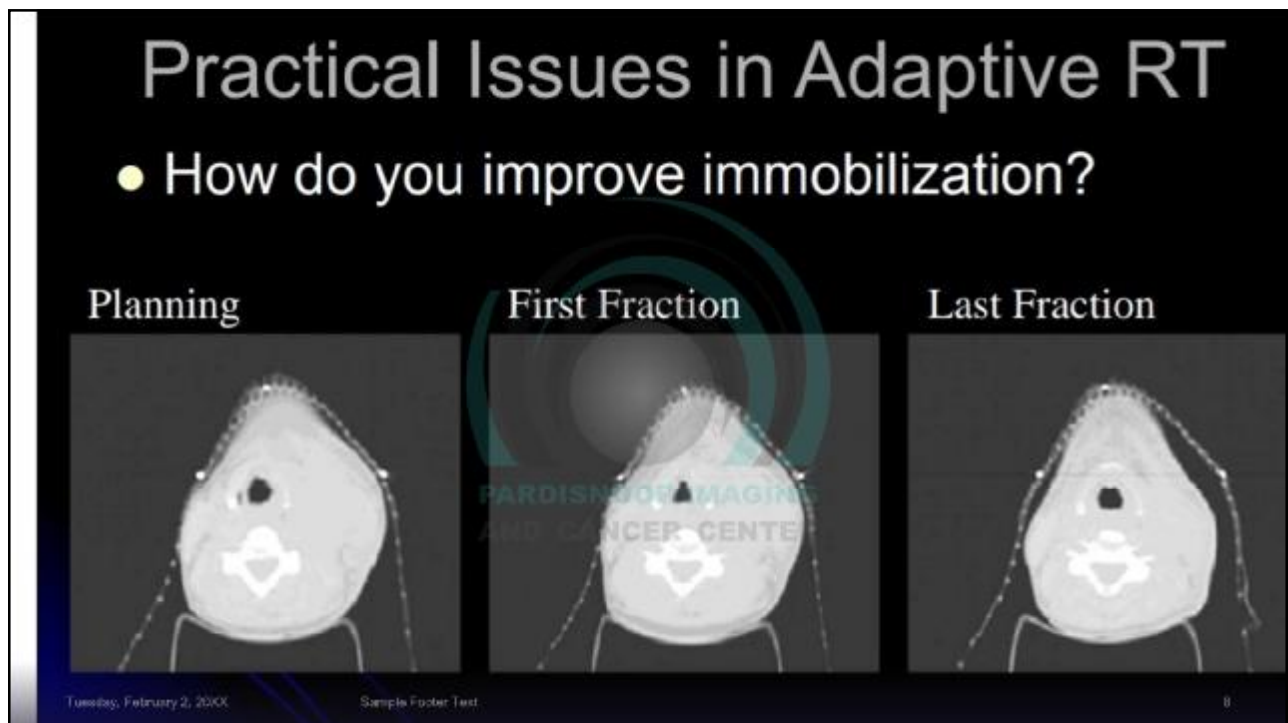
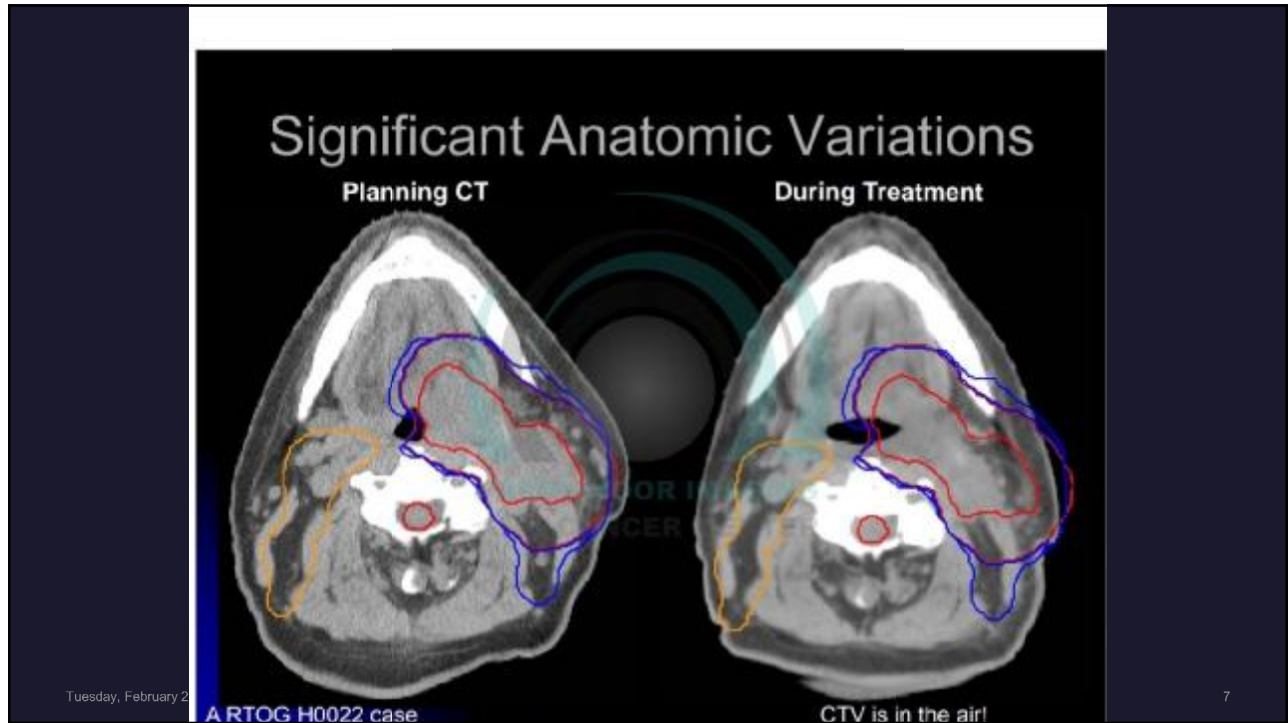
- With the introduction of IMRT and SBRT we have reached a point where the radiation dose can be shaped to the target volume with steep dose gradients to surrounding normal tissues.
- These new techniques introduce an enormous inherent risk.
- *"We are at increased risk of missing very precisely"*

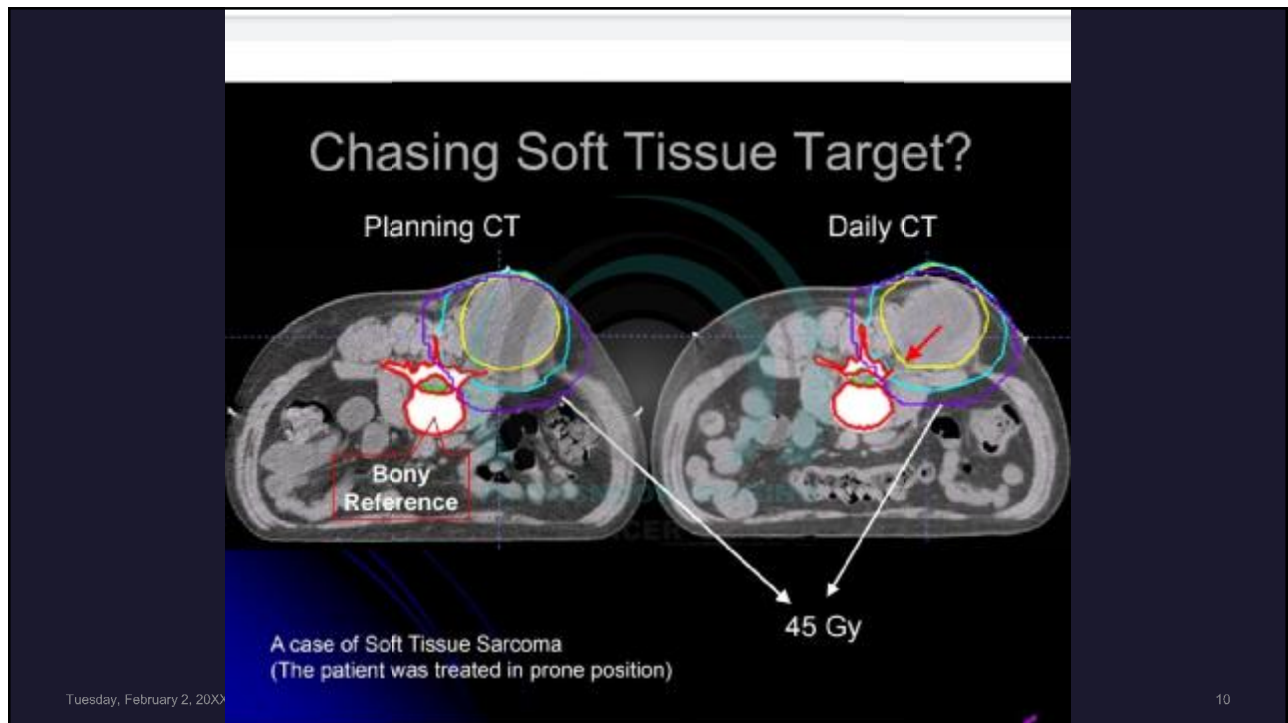
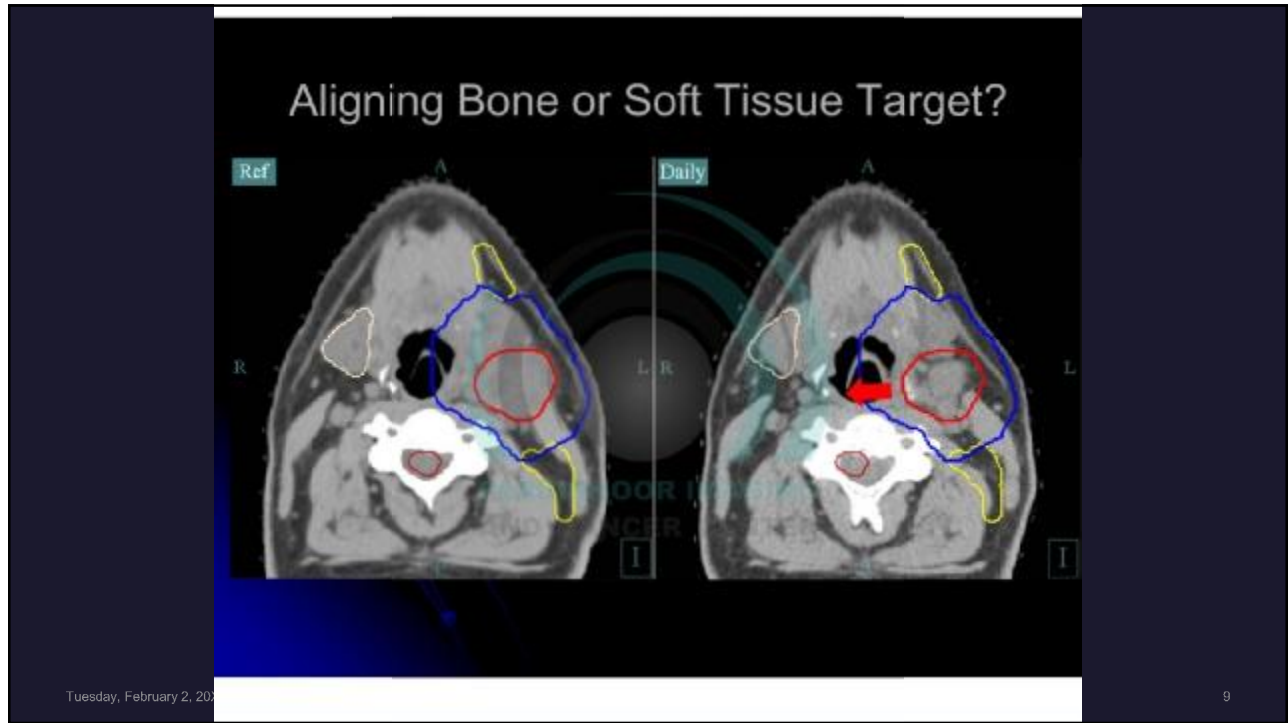


Tuesday, February 2, 20XX Sample Footer Text 2












Solution

- Use patient specific ROI for target alignment
- (bone-based alignment is recommended)
- Better immobilization
- Re -CT simulate



Tuesday, February 2, 20XX Sample Footer Text 12

